

SEAMEN'S
CHURCH INSTITUTE
OF NEW YORK



SEVENTY-EIGHTH
ANNUAL REPORT
1922

SEAMEN'S CHURCH INSTITUTE

OF NEW YORK

Seventy-Eighth Annual Report

PRESENTED AT THE

ANNUAL MEETING OF THE SOCIETY

THURSDAY, JANUARY 25, 1923



YEAR ENDED DECEMBER 31

1922

HEADQUARTERS OF THE SOCIETY
25 SOUTH STREET (CORNER COENTIES SLIP)
NEW YORK CITY

TELEPHONE BOWLING GREEN 3620



THE "INSTITUTE"

25 South Street (corner Coenties Slip)

In view of every vessel entering the Harbor. Thirteen stories above the street and three below, of concrete, steel and brick. Ground, building and equipment cost of \$1,500,000. Titanic Memorial Lighthouse Tower and Time Ball, erected by popular subscription. Flag Pole and Flags presented by Lafayette Post No. 140, G. A. R. Top Floor, Navigation, Marine Engineering and Radio School, Dispensary, Meredyth Whitehouse Memorial, gift of Mr. and Mrs. Francis M. Whitehouse.

Officers and Managers of the Society

Chosen at the *Annual Meeting*, January 25th, 1923.

Honorary President

Rt. Rev. WILLIAM T. MANNING, D.D., D.C.L., 1908

President

EDMUND L. BAYLIES, 1885

Clerical Vice-Presidents

Rt. Rev. FREDERICK BURGESS, D.D., 1906	REV. WILLIAM TUFTS CROCKER, 1903
Rt. Rev. EDWIN S. LINES, D.D., 1908	REV. FRANK WARFIELD CROWDER, D.D., 1916
VERY Rev. HOWARD C. ROBBINS, D.D., 1918	REV. CALEB R. STETSON, D. D., 1922
REV. HENRY LUBECK, LL.D., D.C.L., 1889	REV. W. RUSSELL BOWIE, D.D., 1923
REV. S. DE L. TOWNSEND, D.D., 1900	REV. H. P. SILVER, D.D., 1923
REV. ERNEST M. STIRES, D.D., 1902	REV. FREDERICK BURGESS, JR., 1923

Lay Vice-Presidents

JOHN H. MORRISON,	1877	JOHN A. MCKIM,	1889
LISPENARD STEWART,	1883	ALLISON V. ARMOUR,	1917
ROBERT L. HARRISON,	1901		

Secretary and Treasurer

FRANK T. WARBURTON, 46 Cedar Street, 1888

Lay Managers

B. T. VAN NOSTRAND,	1887	MARINUS W. DOMINICK,	1912
AUGUSTUS N. HAND,	1902	JOHN S. ROGERS,	1913
HERBERT L. SATTERLEE,	1902	LEROY KING,	1913
EDWIN A. S. BROWN,	1904	LOUIS GORDON HAMERSLEY,	1913
CHARLES A. CLARK,	1905	CHARLES E. DUNLAP,	1915
BENJAMIN R. C. LOW,	1905	GEORGE W. BURLEIGH,	1915
HENRY L. HOBART,	1907	EDWIN DE T. BECHTEL,	1915
FRANKLIN D. ROOSEVELT,	1908	BERNON S. PRENTICE,	1915
AYMAR JOHNSON,	1908	JAMES BARBER,	1916
ERNEST E. WHEELER,	1908	JOHN J. RIKER,	1906
ROBERT McC. MARSH,	1908	F. KINGSBURY CURTIS,	1920
CHARLES W. BOWRING,	1909	EDWARD J. BARBER,	1920
ORME WILSON, JR.,	1910	FRANK C. MUNSON,	1920
FRANKLIN REMINGTON,	1911	JUNIUS S. MORGAN, JR.,	1920
J. FREDERIC TAMS,	1911	WALTER WOOD PARSONS,	1921
BAYARD C. HOPPIN,	1911	HARRY FORSYTH,	1921
OLIVER ISELIN,	1912	FRANKLIN W. ROBINSON,	1921
VINCENT ASTOR,	1912	HENRY DEARBORN,	1922
SIR T. ASHLEY SPARKS,	1912	KERMIT ROOSEVELT	1923

Honorary Members

CLAYTON PLATT,	1891	FRANCIS M. WHITEHOUSE,	1917
----------------	------	------------------------	------

Superintendent

REV. ARCHIBALD R. MANSFIELD, D.D., 1895

Note: Dates refer to year of election.

Committees of the Board of Managers

South Street Institute and Sub-Committees

EDMUND L. BAYLIES, Chairman, 54 Wall Street
ALLISON V. ARMOUR, Vice-Chairman

VINCENT ASTOR	MARINUS W. DOMINICK	JOHN A. MCKIM
JAMES BARBER	CHARLES E. DUNLAP	JUNIUS S. MORGAN, JR.
EDWIN DE T. BECHTEL	AUGUSTUS N. HAND	FRANK C. MUNSON
REV. W. RUSSELL BOWIE, D.D.	ROBERT L. HARRISON	FRANKLIN REMINGTON
CHARLES W. BOWRING	HENRY L. HOBART	FRANKLIN W. ROBINSON
GEORGE W. BURLEIGH	OLIVER ISELIN	JOHN S. ROGERS
EDWIN A. S. BROWN	AYMAR JOHNSON	KERMIT ROOSEVELT
REV. WM. TUFTS CROCKER	LEROY KING	SIR T. ASHLEY SPARKS
F. KINGSBURY CURTIS	RT. REV. EDWIN S. LINES, D.D.	J. FREDERIC TAMS
HENRY DEARBORN	BENJAMIN R. C. LOW	B. T. VAN NOSTRAND
	ERNEST E. WHEELER	

Committee on Social Service Work

BENJAMIN R. C. LOW, Chairman, 120 Broadway

GEORGE W. BURLEIGH	LOUIS GORDON HAMERSLEY	AUGUSTUS N. HAND
	RT. REV. EDWIN S. LINES, D.D.	

Committee on Entertainment

LEROY KING, Chairman, 15 William Street

EDWIN DE T. BECHTEL	OLIVER ISELIN	AYMAR JOHNSON
	FRANKLIN W. ROBINSON	

Committee on Religious Work

HENRY L. HOBART, Chairman, 120 Front Street

REV. W. RUSSELL BOWIE, D.D.	CHARLES A. CLARK	ROBERT L. HARRISON
EDWIN A. S. BROWN	REV. WM. TUFTS CROCKER	BENJAMIN R. C. LOW

Committee on Educational Work, Library, Etc.

ALLISON V. ARMOUR, Chairman, 375 Park Avenue

J. FREDERIC TAMS, Vice-Chairman, 52 Pine Street

EDWIN DE T. BECHTEL	MARINUS W. DOMINICK	LOUIS GORDON HAMERSLEY
FRANK C. MUNSON	FRANKLIN D. ROOSEVELT	FRANKLIN W. ROBINSON

Committee on Employment and on Seamen's Savings

CHARLES E. DUNLAP, Chairman, 1 Broadway

JAMES BARBER	FRANK C. MUNSON	SIR T. ASHLEY SPARKS
EDWARD J. BARBER	WALTER WOOD PARSONS	J. FREDERIC TAMS
HENRY DEARBORN	KERMIT ROOSEVELT	

Committee on Boat and Harbor Service

J. FREDERIC TAMS, Chairman, 52 Pine Street

LOUIS GORDON HAMERSLEY	AYMAR JOHNSON	FRANKLIN W. ROBINSON
OLIVER ISELIN	LEROY KING	

North River Station

EDWIN A. S. BROWN, Chairman, 1 Newark Street, Hoboken, N. J.

EDMUND L. BAYLIES	ROBERT MCC. MARSH
-------------------	-------------------

Legislation

ERNEST E. WHEELER, Chairman, 67 Wall Street

EDMUND L. BAYLIES	EDWIN DE T. BECHTEL	JOHN S. ROGERS
-------------------	---------------------	----------------

Ways and Means

BAYARD C. HOPPIN, Chairman, 120 Broadway

JOHN S. ROGERS, Vice-Chairman, 27 Cedar Street

HENRY DEARBORN	ROBERT L. HARRISON	FRANK T. WARBURTON
HARRY FORSYTH	JOHN A. MCKIM	ERNEST E. WHEELER
LOUIS GORDON HAMERSLEY	WALTER WOOD PARSONS	

Trust Funds

JOHN A. MCKIM, Chairman, 6 East 74th Street

ROBERT L. HARRISON	JUNIUS S. MORGAN, JR.	HARRY FORSYTH
--------------------	-----------------------	---------------

Committee on "The Lookout"

EDMUND L. BAYLIES	F. KINGSBURY CURTIS	HENRY L. HOBART
-------------------	---------------------	-----------------

Attorneys for the Society

CARTER, LEDYARD & MILBURN, 54 Wall Street

ANNUAL REPORT

of the

BOARD OF MANAGERS

January, 1923

Another year of the absorbingly interesting and richly human and humane life of the SEAMEN'S CHURCH INSTITUTE OF NEW YORK!

Our seventy-eighth anniversary finds us youthful in the sense of an alluring and ever-widening prospect of usefulness ahead—limited only by our means. This limitation is now most keenly felt in the inconvenience and discouragements incidental to an overcrowded and outgrown building. Our spacious sixteen-floor hotel, with its capacity for lodging 810 seamen a night and with its assembly room, chapel and reading rooms and all the other adjuncts of a hotel, and housing also the executive offices of the Society, although it has been in use only a little more than nine years, is now too small.

What is the character of this abounding life which so soon threatens to strain and burst the walls that house it? It explains itself, of course, in the nature of the service the INSTITUTE renders to seamen. It furnishes at a moderate price lodging, food, care of dunnage and other services such as are rendered by a hotel. In addition, and this represents the margin of cost over income, it affords the comfort of game and reading rooms, maintains a dispensary, a loan department, and furnishes entertainment and social and religious service of many kinds. It receives the seamen's money for safe keeping or transmission to his relatives, it handles his mail, and finally, it maintains a staff of tactful men and women who give all kinds of help and advice.

A short summary of the work of the various departments follows:

RELIGIOUS AND SOCIAL SERVICE DEPARTMENTS

Here, if anywhere, is the "soul" of the INSTITUTE. Good quarters and food at a reasonable price, after all, only supply physical needs. The abounding life of the INSTITUTE, of which we have spoken, is only interesting as it has spiritual significance. It is in the work of the religious and social service departments that we must find a final sanction.

During the past year in particular our workers have felt the effects of strongly organized and directly anti-religious influences. This has affected the attendance at the Chapel services. But, of course, some occasion for personal contact, other than these services, is essential. To enlist the assistance of the stronger type of men living in the building an organization known as SEAMEN'S FELLOWSHIP has been planned. This is in the nature of a club to develop

friendly relations between the men and our workers in the house and for mutual co-operation and welfare.

Systematic attention is given to visiting the hospitals. The work is done by one of our chaplains and by a capable and experienced woman. For nearly four years our chaplain has been in charge at the U. S. Marine Hospital, Stapleton, New York. He has this past year held 64 services, with a total attendance of 2,215 and he has conducted 40 funeral services. To this and other hospitals 356 visits have been made by him, consuming nearly 1,500 hours in the wards. These visits mean all kinds of practical help to the sick sailor. Similar work is performed in other hospitals by our woman visitor.

Last May we organized a separate SOCIAL SERVICE DEPARTMENT. Its development has been remarkable. Fifteen men and women on full or part time are required to meet the ever-increasing demands. At any time during the day a line of seamen may be seen waiting for their turn, just as at a physician's office or clinic. About every kind of human problem and trouble is here presented for solution—some, of course, of a trivial character, and many involving the deepest human emotions. At the present rate it would appear that between 26,000 and 30,000 interviews and cases would be handled yearly. Many of these cases are examples of the injustice and wrongs of which the sailor is the peculiar victim. The attempt to right these wrongs in a whole-hearted and yet intelligent and scientific way is certainly the work of the Master.

Direct relief constitutes, of course, a large part of this work and is difficult to handle wisely. "Unsecured loans" is the best description for such money advances as are made, and for other help the words "getting trust." The landsman constantly gets credit from his butcher or grocer. The no-land-contact needy sailor can get no such credit. Here the INSTITUTE steps in. The charity hand-out has no place in this scheme—except for the destitute and incapacitated. The following statistics indicate the extent of the work of the Relief Department: Number of men provided with meals, 3,008, costing \$1,730.27. Number of men furnished with lodgings, 2,007, at a cost of \$867.27. Number of pieces of baggage released for destitute seamen, 185, costing \$113.77. Cash loans to 1,383, total amount of cash \$1,361.58. Petty cash to 143, total amount \$274.46. Passport photographs for 72 men, costing \$46.00. Free baths to 34, amounting to \$5.15. Total expenditure \$4,398.34, of this amount the individual seamen have returned to the Institute \$2,039.74, so that the total cost of the amount of relief actually given amounted to \$2,358.60.

To thousands literature, knitted articles and clothes have been distributed. Hundreds have been sent to the hospitals, to the various organizations, Legal Aid Society, Municipal Lodging House, etc., etc. We have assisted in bringing about settlements of four compensation cases for injuries or wages amounting to \$1,144.00, and besides these have assisted in many salvage cases resulting in substantial payments.

THE INSTITUTE DISPENSARY partly supported by the United States Public Health Service, and partly by us, has treated a total of 7,676 cases. Since August classes have been held in first aid, and of those taking the course 303 have been examined and passed. As reported last year, the maintenance of radio medical advice for men at sea is the result of experiments made by us and has been accomplished through our direct efforts.

A systematically conducted OLD CLOTHES ROOM is a help to our case worker. The Department of Parks has recently promised a *play* (sport) *director* and *concerts* at Jeanette Park next summer.

A general EMPLOYMENT BUREAU now takes the place of our former shipping department. The unemployment situation involving great distress and need, led, last winter, to the establishment of this bureau. Shipping companies are again and in increasing numbers seeking our cooperation in securing men for their vessels. From January 23, 1922 to January 1, 1923, we furnished shipping jobs to 5,428 men, and shore jobs to 893 men, making a total of 8,318 men given employment.

The SOCIAL SERVICE DEPARTMENT has had the splendid cooperation of the Legal Aid Society and of the City and Federal authorities.

THE BUILDING AND MECHANICAL EQUIPMENT

This great hotel, always crowded and having a capacity of 810 beds, is in charge of a competent superintendent and engineer. The boilers, engines, generators and pumps seem to show no signs of deterioration. On February 2nd, in order to make repairs on the steam main, there occurred the first shut-down since April, 1918,—a continued running of the generator plant for three years and eight months without a stop. We are now in the process of interior painting from the thirteenth floor down.

More room in the BAGGAGE DEPARTMENT is greatly needed. During the year we checked in 50,992 pieces and checked out 47,906, with a grand total of 107,311 pieces handled—a daily average of 450 pieces.

THE LAUNDRY, equipped to take care of a house capacity of 518 guests, is now operated both night and day, and is carrying a greater load than its normal capacity. We have handled during the year 1,168,000 pieces at a cost of well under one-half a cent per piece.

HOTEL DESK

The desk staff of seven has not only the responsibility of selling rooms and beds and conducting the usual hotel routine, but is held responsible for receiving seamen's moneys for deposits and his valuables and baggage (when the baggage and wages department are closed), and must handle details in reference to the seamen's relationship with the consulates, the shipping companies, and with our own ACCOUNTING DEPARTMENT in accurately accounting for lodging charges, meal tickets, bath tickets, etc, etc.

Seamen occupying lodgings left \$88,700 at the desk during the hours when the Seamen's Wages Department was closed. The desk handled 394 packages of valuables; received \$123,830.20 for rooms and beds, sold meal tickets amounting to \$3,560.15; sold 3,700 bath tickets. A total of 185,110 lodgings were sold and lodgings were refused to 27,139 seamen because of lack of space.

RESTAURANT, GENERAL STORES AND PURCHASING DEPARTMENTS

The total number of sales in the RESTAURANT amounted to 407,663, with cash received in the sum of \$84,653.57. More breakfasts could be served if we had increased seating capacity.

The sales at the SODA FOUNTAIN, which includes sales of tobacco, etc., amounted to \$26,389.87.

We maintain, for economy of administration and purchasing, *general stores*, consisting of supplies of groceries, cleaning material, stationery, postage and general supplies. The value of the supplies issued to other departments amounted this year to \$13,959.53. Purchases through the Purchasing Department approximated \$135,879.

SEAMEN'S WAGES

For many years the INSTITUTE has afforded the seaman facilities for depositing or transmitting his wages. At one time these deposits and transmissions amounted to over \$1,000,000 in one year. Recently, owing to unemployment and depression in the shipping industry, the amount so deposited has decreased. Last year there were 4,195 deposits, amounting to \$529,544.84, of which amount \$151,607.99 was transmitted to the seaman's family or dependents in various parts of the world. There were 349 travelers checks sold, amounting to \$6,250.

POST OFFICE

This is a department incidental to the operation of the hotel, which is not self-sustaining but is of invaluable service to seamen. The total number of pieces of mail received was 190,273. About 19,000 pieces were forwarded on request. We received for the rental of 801 boxes \$2,050.44. Four men are employed in this department.

NAVIGATION, MARINE ENGINEERING AND RADIO SCHOOL

There have been a total of 167 students enrolled during the year, of whom 120 have passed their examinations given by the United States Local Inspectors. There have been 53 lectures on subjects of navigation and marine propulsion, and 155 first aid lectures have been given by the Surgeon of the United States Health Service on duty at the building.

THE "LOOKOUT"

Through this publication the work of the INSTITUTE is given publicity. Appeals for special objects are made, such as the campaign for bricks for the

War Memorial in Jeanette Park. It is of ever increasing usefulness, and its stories of happenings at the INSTITUTE, visualize our work for our friends who cannot see the INSTITUTE in operation.

The INSTITUTE maintains a SLOP CHEST or clothing store, and TAILOR and BARBER SHOPS.

BRITISH APPRENTICES

The twenty-four successful years of splendid work for these boys has been largely due to the SEAMEN'S BENEFIT SOCIETY, which was founded in 1900 by Miss Augusta M. de Peyster, to assist the SEAMEN'S CHURCH INSTITUTE OF NEW YORK, in its service to Seamen and particularly for the British Apprentice boys. It has gone soberly about its business of friendliness and good will all these years, and the best wage this service has brought is that which can never be counted—the good will of thousands of British fathers and mothers all over the world, who follow their sons across the seas with anxious thoughts, and who are grateful from the bottom of their hearts to America and Americans for making these boys at home and happy, and safe from the dangers of a strange port.

The daily average attendance of these boys, who are in training to become ships' officers in the British Merchant Marine, is about twenty-five. (See the report of the Society on page 18.)

NORTH RIVER STATION

It has been long felt that this Station, which was opened on the North River in October, 1846, had because of unavoidable conditions, outlived its usefulness. After most thorough investigation and conscientious consideration, the Board of Managers unanimously decided to close permanently the Station early in the year 1923.

The Station is now very disadvantageously located and the buildings are impracticable to meet the requirements of modern institutional work for seamen. There are on West Street, strategically located, five other Institutions for Seamen, with resulting reduplication of work.

For these and other similar reasons, it seemed wise to the Board to discontinue the Station.

As pioneers in this section of the Port, this Society will, however, retain its right to revive its work on the North River, if, in the future, opportunity offers.

The decision with regard to the disposition of the property, which has not been made, will be noted in the next Annual Report.

WAYS AND MEANS DEPARTMENT

The burden of raising the annual budget rests upon the Committee on Ways and Means. With the ever-increasing work of the INSTITUTE old friends have to be retained and new ones constantly found. The INSTITUTE needs its friends as never before. A comprehensive and accurate system of account-

ing is maintained, and it is believed by the Board of Managers that the administration of the INSTITUTE is upon an efficient business basis, and is conducted with the utmost economy.

LEGACIES

Friends who have recently died have bequeathed to us the following legacies:

Arnold Thayer	\$ 5,000
Emily Howland Bourne	15,000
Henry A. Laughlin	10,000
Lucy Kirtland	3,000
Maria L. Vanderpoel	4,000
Francis Edward Pouch	500

MERCHANT SEAMEN WAR MEMORIAL

The MEMORIAL STAGE in Jeanette Park in Memory of the Merchant Seamen, who served in the Great War, which was mentioned in our last Annual Report as a hope, is now an accomplished fact. Although at the time when this report goes to press it is not wholly completed, concerts and entertainments have already been given there, and it is hoped in two months' time to have finished those few last things which remain to be done. At an early date it will be dedicated and presented to the City, a gift from the friends of this INSTITUTE to the memory of those Merchant Seamen, living and dead, who carried on so bravely in those difficult days.

The Inscriptions on the Official Tablets in the back and front walls of the Memorial read as follows:

Anno Domini—1923
MEMORIAL
TO THE
MERCHANT SEAMEN
WHO SERVED IN THE
GREAT WAR—1914-1918
* * *
A GIFT TO THE CITY
FROM FRIENDS
OF THE
SEAMEN'S CHURCH
INSTITUTE
OF NEW YORK

IN REMEMBRANCE
OF THE
OFFICERS AND MEN
OF THE
MERCHANT MARINE,
WHO, IN THE WORLD WAR OF 1914-1918,
WITHOUT FERVOR OF BATTLE
OR PRIVILEGE OF FAME,
WENT DOWN TO THE SEA
AND ENDURED ALL THINGS.

* * *
THEY MADE VICTORY POSSIBLE
AND
WERE GREAT WITHOUT GLORY

In closing this report the Board of Managers cannot but feel that it inadequately describes the work of the INSTITUTE. It seems quite impossible to communicate the thrill that one experiences in visiting the INSTITUTE or in attending the annual meeting of the Board. It is by no means easy to raise the annual budget and at times some curtailment of the work has seemed to the Ways and Means Committee unavoidable. In spite of this, however, our present facilities have become so inadequate that the Board of Managers feel that the time has come to raise the funds necessary to extend the building to the adjacent lots purchased some years ago. Whether it will be possible to do this depends, of course, upon our friends.

The Superintendent and his staff and the employees have loyally carried us through another trying year. To them we are deeply grateful.

GENERAL SUMMARY OF WORK

ALL STATIONS AND DEPARTMENTS, JANUARY 1, 1922, TO DECEMBER 31, 1922.
Submitted by the REV. ARCHIBALD R. MANSFIELD, D. D., Superintendent.

SEAMEN'S WAGES DEPARTMENT

Number of Deposits.....	4,195	Amount of Transmissions... \$151,607.99
Amount of Deposits.....	\$529,544.84	Notary Signatures..... 384
Number of Transmissions....	1,206	

SHIPPING DEPARTMENT

Men signed	5,425	Total given employment.... 7,318
Men given temporary work..	1,893	Number of vessels supplied.. 170

RESTAURANT, SODA FOUNTAIN, SLOP CHEST, TAILOR, LAUNDRY, LODGINGS, MAIL, BAGGAGE, WASH ROOM

Total meals served.....	407,663	Lodgings registered	291,212
Sales at Soda Fountain.....	285,265	Mail received	190,273
Sales at Slop Chest.....	4,815	Baggage received	50,961
Sales at Tailor Shop.....	2,146	Barber customers	10,800
Laundry customers	1,745	Wash room tickets.....	3,700

RELIGIOUS AND SOCIAL, INCLUDING RELIEF AND CLINIC

English services	169	Total attendance	52,741
Total attendance	10,528	Knitted and other useful articles distributed	6,555
Bible classes	31	Christmas gifts	575
Total attendance	1,944	Reading matter distributed...	4,284
Miscellaneous services	75	Home Hour	53
Attendance Miscel. services..	2,330	Attendance	5,326
Communion services, Institute	60	Relief assisted through M. M. & B. Fund and other funds	7,754
Communion services, Hospital	13	Treated in Inst. Dispensary...	7,676
Baptisms	7	Referred to other societies..	600
Marriages	13	Sent to hospitals	487
Funerals	63	Visits to hospitals	591
Services at hospitals.....	64		
Total attendance	2,215		
Entertainments	101		

NAVIGATION AND MARINE ENGINEERING AND RADIO SCHOOL

Students enrolled	167	Examined and passed Local	120
First aid lectures	155	Inspectors	6
Attendance first aid lectures	113	Daily average attendance	
School certificates issued....	8		

TREASURER'S ANNUAL STATEMENT

JANUARY 1, 1922 TO DECEMBER 31, 1922

INCOME

Revenue from Outside Sources:	
Subscriptions and Donations	\$100,000.76
Church Offerings	3,888.36
Ship Collections	5,738.62
Net Income from Invested Funds	4,348.98
	\$113,976.72
Revenue from Institute Activities:	
Hotel (including Lodgings, Barber Shop, Wash Room), Post Office, Baggage Room, Lunch Counter, Soda Fountain, Slop Chest, Navigation, Marine Engineering and Radio School	280,514.62
Rent, British Consulate General Shipping Branch	1,872.00
Miscellaneous	881.74
	\$397,245.08

EXPENDITURES

Institute Building, 25 South Street:	
Religious and Social Work	31,663.83
Salaries of Superintendent and Staff, Wages of Employes in all other Departments; also Supplies for Hotel, Lunch Counter, Engine Room, Slop Chest, Soda Fountain, Navigation, Marine Engineering and Radio School, etc..	356,907.00
"The Lookout": Salaries, Printing and Postage	5,924.61
North River Station: Salaries, Expenses and Repairs	2,784.50
	397,279.94
Deficit	34.86

FRANK T. WARBURTON,
Treasurer.

CERTIFICATE OF AUDITORS

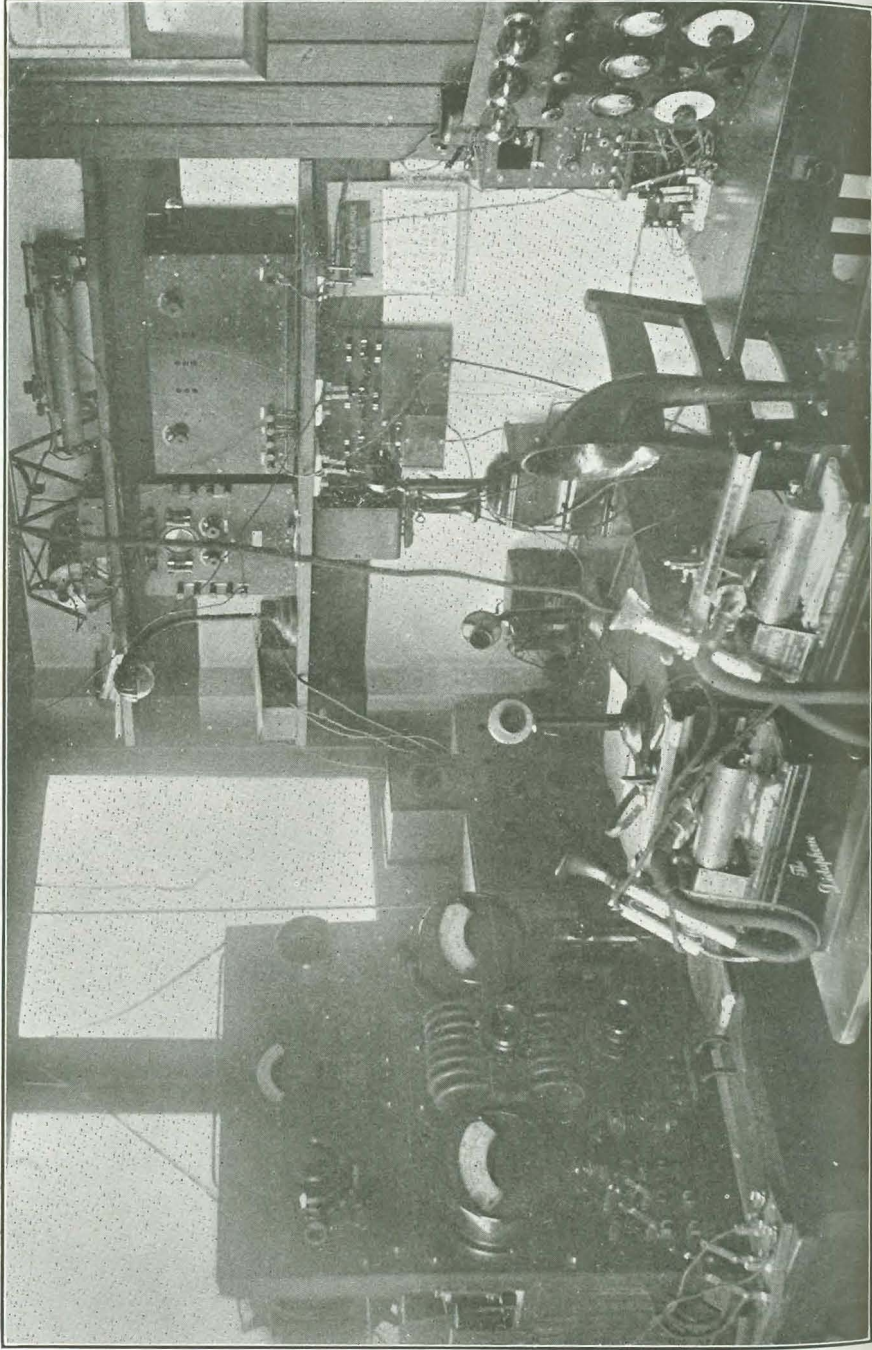
MARWICK, MITCHELL & CO.
Accountants and Auditors

New York, N. Y.
40 Exchange Place,

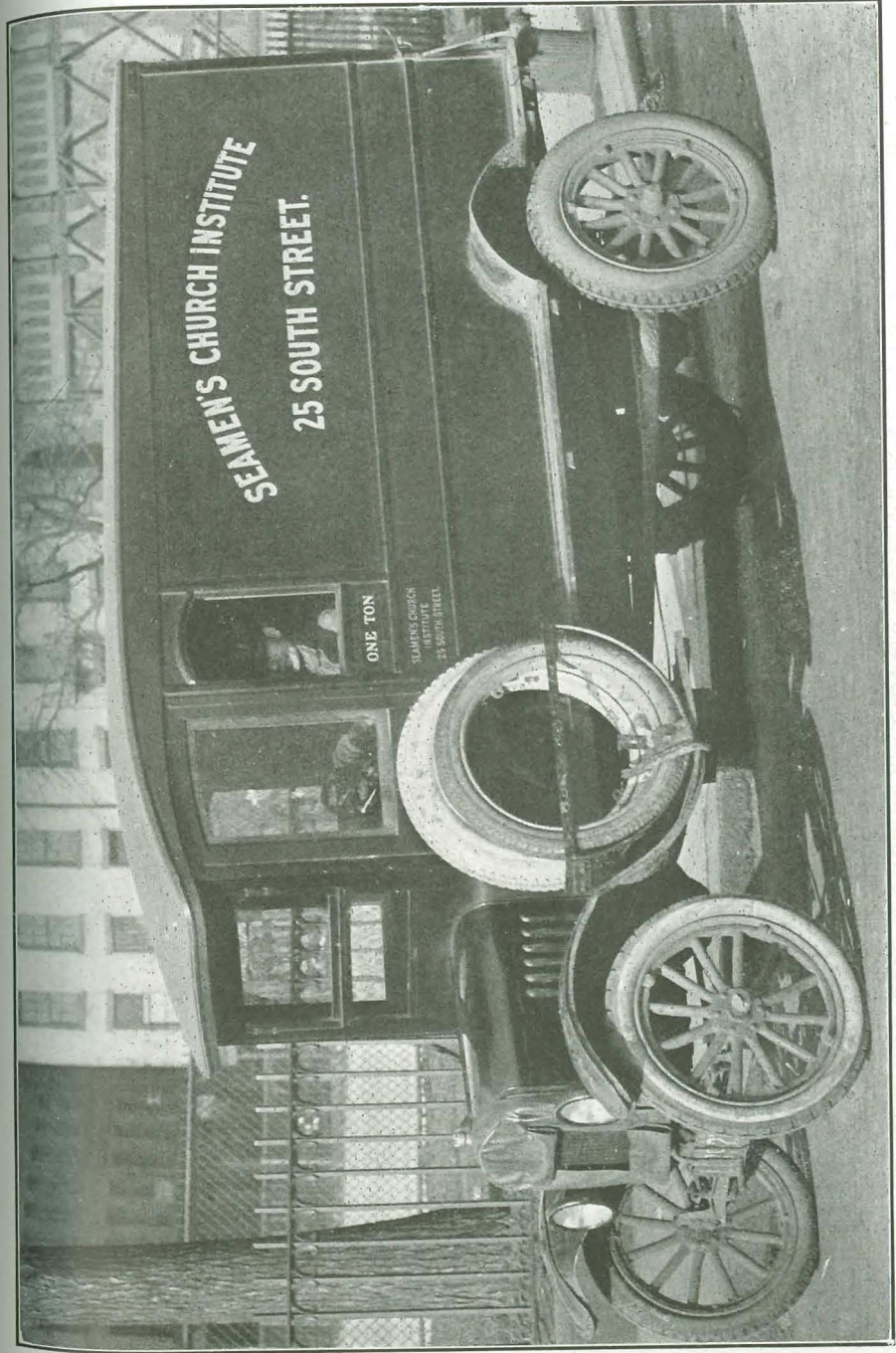
We have audited the accounts pertaining to the operations as shown in the Treasurer's Annual Statement, and hereby certify that, in our opinion, it properly reflects the transactions of the year ended December 31, 1922.

MARWICK, MITCHELL & Co.

40 Exchange Place, New York,
March 15, 1923.



The Original Radio Station in the Chart House, on the Roof of the Institute Building, through which the First Medical Advice was sent to Vessels.



One of our 1922 Gifts—Commercial Truck Presented by Allison V. Armour.

COMMITTEE ON TRUST FUNDS

ASSETS

Securities, etc.		\$245,143.41
Real Estate: 52 Market Street	\$10,000.00	
Front Street property	82,104.34	92,104.34
Cash on deposit:		
Emigrant Industrial Savings Bank	250.00	
Bank of New York & Trust Co.	11,516.17	11,766.17
PERMANENT FUND: Income to be applied to the general uses of the Society.		\$349,013.92
Balance, last report	\$136,275.41	
Legacy, Adele E. Flint	\$5,000.00	
Legacy, Lucie B. Carew	5,000.00	
Legacy, Lucy Kirtland	3,000.00	
Legacy, Arnold Thayer	4,750.00	
Legacy, Mary B. Dortic	3,000.00	
Legacy, Maria L. Vanderpool	4,000.00	
Gift, An Indiana Churchwoman, 10 shares Marconi's Wireless Telegraph Company, Limited. (par £1 Sterling)	100.00	24,850.00
WILLIAM WALDORF ASTOR TRUST FUND: Income to be applied first to the support of Missionary at East River Station, and afterwards to the maintenance of any missionaries employed by the Society.		\$161,125.41
Balance, last report	\$50,936.00	
Add Sinking Fund, transferred from income	58.50	50,994.50
CHARLES E. RHINELANDER FUND: In memory of his wife, Matilda F. Rhineland. Income to be applied to the general uses of the Society		25,000.00
FREDERICK M. DEARBORNE MEMORIAL FUND: To constitute part of the Endowment Fund. Income to be applied to the general uses of the Society.		
Balance, last report	\$22,524.40	
Received from Estate of Mary Benson	2,500.00	25,024.40
		\$262,144.31
FUNDS FOR SPECIAL PURPOSES		
DAVENPORT FUND: Income to be applied to the purchase of books for distribution among seamen		2,000.00
MORRILL FOUNDATION: In memoriam of the late Captain Charles Montgomery Morrill. Income to be applied exclusively to the relief of destitute mariners and those dependent upon them who may have been left destitute by their death while following the sea		17,831.25
HOSIER MORGAN FUND: Income to be used in common with that of the Morrill Foundation Fund		1,735.27
EMILY H. BOURNE FUND: Income to be used in common with that of the Morrill Foundation Fund		5,000.00
SEAMEN'S RELIEF FUND: Income to be used in common with that of the Morrill Foundation Fund		751.95
"C. A. R." MEMORIAL FUND: Income to be used for some needy object		500.00
ROXY M. SMITH FUND: In memory of her husband, W. V. R. Smith. Income to be applied to giving annually an entertainment for seamen on the birthday of W. V. R. Smith, August 2nd.		2,000.00
CAPT. WILLIAM WILSON OWEN MEMORIAL FUND: Income to be applied to the use of destitute sailors under the care of the Institute		250.00
CHAPEL FLOWER FUND: Income to be used for flowers for the altar of the Chapel.		
Balance, last report	\$1,326.87	
Additions to fund	3,374.39	4,701.26
Carried forward		\$292,212.78

Committee on Trust Funds (Continued)

Brought forward		\$292,212.78
RAMAGE ENDOWMENT: Income to be used for the maintenance of dependent seamen		3,000.00
BRITISH AMERICAN WAR RELIEF FUND: Income to be used to relieve distressed British seamen		2,000.00
ANNEX BUILDING FUND: To endow rooms in Annex when built.		
Balance, last report	3,624.78	
Additions to fund:		
Miss M. Elizabeth Lester, for two officers' bedrooms	1,000.00	
Mrs. John Innes Kane	10,000.00	
Miss Harriet E. Devoe and Mrs. J. M. Hodson	500.00	
Mrs. William R. Waters	1,500.00	
Interest	475.10	17,099.88
GERARD BEEKMAN FUND: In memory of his brother, James William Beekman. Income to be used to pay for a lay reader and sailor's friend in the sailors' reading room now dedicated to his brother		15,000.00
CHARLES E. POTTS FUND: Income to be used for the maintenance of the rooms in the building now or at any time hereafter maintained by the Institute known and designated as the Isabella Potts and Philip Ruprecht Rooms.		
Balance, last report	10,000.00	
Addition to fund	5,000.00	15,000.00
Total		\$349,013.92
INCOME		
Received from securities, etc.		\$9,299.16
Received from Emigrant Industrial Savings Bank		10.10
Received from Bank of New York & Trust Co.		257.41
		\$9,566.67
Distributed as follows:		
Permanent Fund	Paid Treasurer	\$2,053.37
Astor Fund	" "	2,031.39
Rhineland. Fund	" "	1,101.38
Dearborne Fund	" "	1,063.36
Davenport Fund	" "	85.12
		\$6,334.62
Morrill Foundation Fund	" "	785.19
Morgan Fund	" "	72.34
Bourne Fund	" "	247.50
Seamen's Relief Fund	" "	12.75
"C. A. R." Memorial Fund	" "	13.60
Capt. Owen Fund	" "	10.00
Ramage Endowment Fund	" "	178.20
British American Relief Fund	" "	84.15
		1,403.73
Roxy M. Smith Fund	" "	85.12
Chapel Flower Fund	" "	82.57
Gerard Beekman Fund	" "	678.87
Potts Fund	" "	347.95
		1,194.51
Annex Building Fund, added income to Fund ..	" "	475.10
Astor Fund, transferred to Sinking Fund	" "	58.50
Bank of New York & Trust Co., commissions	" "	100.21
		633.81
		\$9,566.67

Dated, New York, December 30th, 1922.

JOHN A. MCKIM,
ROBERT L. HARRISON,
HARRY FORSYTH,
Committee on Trust Funds.

Securities examined and found to agree with the foregoing account.
LE ROY KING,
Auditing Committee.

Twenty-Second Annual Report of the SEAMEN'S BENEFIT SOCIETY

The SEAMEN'S BENEFIT SOCIETY has given another year of undivided devotion to the welfare of seamen; another year of successful, intelligent, constructive social service work for a patient and often neglected class of men and boys.

As in the previous twenty-one years of its existence the Society has made the work of the Apprentice Department of the Institute its particular concern.

It has provided the afternoon teas that are served there daily and made possible the Thursday evening parties, which are such a bright spot in the lives of the boys that one of them recently prayed all week that his ship might not leave port until after the next dance. It has also paid the salary of the worker whose business it is to stand between these lads and loneliness.

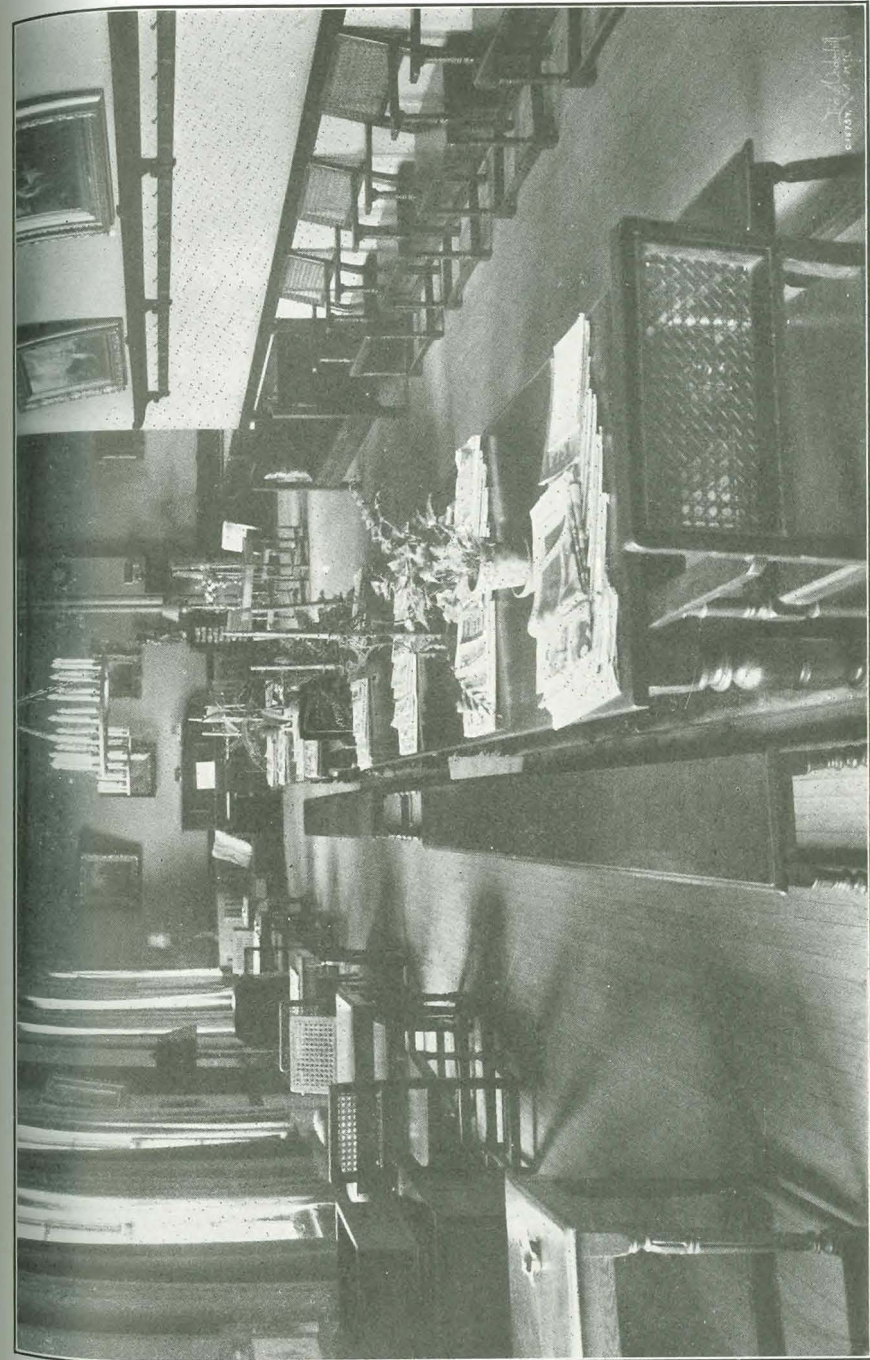
The Lenten Sewing Class held five meetings at the homes of Miss Ethel Zabriskie, Miss Emily Buch, Mrs. Edward L. de Rose, Mrs. Clarence C. Chapman and Mrs. Lewis G. Morris. The dues of the Sewing Class were \$508 and the expenses \$81, leaving a balance of \$427. At this class all the table linen needed for the Apprentice Room was made, also 510 towels for the use of the lodging department of the Institute.

The SEAMEN'S BENEFIT SOCIETY also supplied the Institute with quantities of literature and socks, of which it stands continually in need.

On December 12th, the Society gave a performance of "The Torch-Bearers" for the benefit of the Apprentice Department at which \$1,854.45 was cleared.

But the Society has never forgotten in practical service, the kindly human sympathy, which is butter to the bread of charity. Members of the organization have visited the Institute several times on Sunday evenings and given the men that pleasant contact with friendly womanly women, from which they are shut out by circumstances, for so great a part of their lives, and which they so deeply appreciate.

AUGUSTA M. de PEYSTER,
Secretary.



The Apprentice Lads' Room in the Seamen's Church Institute, Built and Furnished by the Seamen's Benefit Society.

SEAMEN'S BENEFIT SOCIETY

Officers

MISS CATHERINE S. LEVERICH, *President* MISS CORNELIA L. GALLATIN, *Treasurer*
 MISS AUGUSTA MORRIS DE PEYSTER, *Secretary*

Active Members

MRS. H. GLOSTER ARMSTRONG	MRS. S. VERNON MANN
MRS. WALTER P. ANDERTON	MRS. FRANK B. PORTER, JR.
MISS JOSEPHINE BEEKMAN	MRS. JOSEPH F. SIMMONS
MISS FRANCES DE PEYSTER	MRS. HENRY C. SWORDS
MISS ISABEL GREGORY	MRS. CHARLES F. SWAN
MRS. RYDER HENRY	MISS EMILY VAN AMRINGE
MISS MARGARET D. LEVERICH	MISS MARY WAGSTAFF
MRS. GEORGE A. LUNG	MISS ETHEL ZABRISKIE
MRS. HOWARD T. MARTIN	

Associate Members

MR. H. F. ALEXANDER	MRS. F. KINGSBURY CURTIS	MRS. JOSEPH H. HUNTER
MRS. RICHARD BABBAGE	MRS. JOHN R. DELAFIELD	MRS. B. T. B. HYDE
MISS LAURA BACARDY	MRS. JAMES MAY DUANE	MISS MARGARET A. JACKSON
MRS. JAMES T. BAILY	MISS ETHEL DUBOIS	MISS MARY L. JACKSON
MRS. GEORGE B. BAKER	MISS KATHARINE DUBOIS	MRS. WILLIAM F. JOHNES
MISS LOUISE H. BARNARD	MISS NINA DUBOIS	DR. WILLIAM W. JONES
MRS. CHARLES B. BARKLEY	MISS LAURA DUDLEY	MISS LUCY H. KEAN
MRS. CHARLES F. BASSETT	MRS. WILLIAM MCK. DUNN	MRS. RUTHERFORD KEARNEY
MISS DOROTHEA T. BATTY	MRS. FREDERIC F. DURAND	MRS. C. B. KEFERSTEIN
MRS. EDMUND L. BAYLIES	MRS. J. S. DYETT	MR. RUDOLPH KEPPLER
MRS. T. D. BENSON	DR. KENDALL EMERSON	MRS. DAVID B. KING
MR. JOHN BEST	MRS. J. M. W. FARNHAM	MISS CORNELIA KIRBY
MR. GEORGE F. BETTS	MRS. HAMILTON FISH	MRS. J. C. KING
MRS. J. J. BLODGETT	MRS. ERNEST FLAGG	MRS. R. C. KIRKPATRICK
MISS EVA K. BOWLBY	MRS. ANSON R. FLOWER	MR. JOHN KOBLEGARD
MISS J. C. BRADLEY	MISS FANNY C. FRANCIS	MRS. JOSEPH KRISCHKER
MRS. JOHN H. BREAKENRIDGE	MR. A. E. GALLATIN	MISS MARGARET L. LACKEY
MRS. EDWARD N. BREITUNG	MRS. GEORGE I. GAMMELL	MRS. WOODBURY G. LANGDON
MRS. WILLIAM H. BROWNING	MRS. GEORGE T. GARDINER	MRS. H. L. LAWS
MR. ALEXANDER JAY BRUEN	MRS. ELBERT H. GARY	MRS. JAMES S. LAWSON
MISS CAROLINE T. BURKHAM	MRS. J. J. GOODWIN	MRS. JOSEPH T. LOW
MRS. ANDREW CARNEGIE	MISS FANNY GREGORY	MRS. SETH LOW
MISS HELEN L. CARTER	MRS. ANSON W. HARD, JR.	MRS. WILLIAM G. LOW
MRS. L. A. CERF	MRS. WILLIAM A. HANWAY	MRS. H. VAN C. LUNG
MISS ALICE S. CHASE	MRS. MARY E. HASTINGS	MRS. LEA McL. LUQUER
MRS. GEORGE L. CHENEY	MISS CAROLINE C. HAYNES	MRS. W. J. T. LYNCH
MISS ANNIE CLARKSON	MR. F. HEISENBUTTEL	MRS. JAMES MACDONALD
MRS. J. H. COCHRAN	MISS M. H. HICKS	MRS. CHARLES M. MACNEILL
MRS. CHARLES S. COLEMAN	MRS. ROBERT HOE	MRS. ALFRED T. MAHAN
MISS FRANCIS SOLT	MRS. R. S. HOLT	MR. HERMAN L. MARSHALL, JR.
MRS. H. V. CONRAD	MRS. FREDERICK T. HOPPIN	MISS FLORENCE C. MARTIN
MRS. ARTHUR COPPELL	MISS SARAH L. HORN	MRS. LEROY MCKIM
MRS. C. VANDERBILT CROSS	MRS. E. DEP. HOSMER	MRS. DAVID MCCORMICK
MRS. H. CHAUNCEY CRYDER	MR. CHARLES F. HOWLAND	MISS STELLA MEAD
MRS. B. FARQUAR CURTIS	MRS. FRANK L. HUMPHREYS	MRS. EDWARD P. MEANY

MRS. JOHN MEYERKORT
 MISS ADELINA MOLLER
 MRS. JAMES L. MORGAN
 MRS. HENRY LEWIS MORRIS
 MRS. NEWBOLD MORRIS
 MRS. J. I. MOUNT
 MRS. WM. A. NETTLETON
 MISS EMILY NORRIE
 MRS. JAMES B. OLIVER
 MRS. CHARLES E. ORVIS
 MRS. AMBROSE PACKARD
 MISS CAROLINE H. PALMER
 MRS. ALFRED DUANE PELL
 MR. HOWLAND PELL
 MISS NANNA H. PETERS
 MRS. EUGENE POOL
 MRS. MARY A. POOL
 MRS. WILLIAM PRALL
 MRS. HENRY D. PRESCOTT
 MRS. WILLIAM M. PURDY
 MRS. ALBERT E. PUTNAM
 MR. W. A. PUTNAM
 MRS. W. G. REYNOLDS

MRS. CHARLES H. ROBERTS
 MRS. FRANKLIN D. ROOSEVELT
 MRS. JAMES R. ROOSEVELT
 MRS. W. EMLEN ROOSEVELT
 MISS ANNIE R. RUSSELL
 MR. T. SHAW SAFE
 MRS. HENRY G. SANFORD
 MRS. HERBERT L. SATTERLEE
 MISS DOROTHY SCHIEFFELIN
 MRS. MORTON L. SCHWARTZ
 MRS. EDWARD B. SEXTON
 MRS. HENRY F. SHOEMAKER
 MRS. HENRY W. SHOEMAKER
 MR. CHARLES SKENTELBERY
 MISS META A. SOUTHMAYD
 MRS. EDWARD SPARROW
 MISS H. K. STEELE
 MRS. EDWARD A. STOREY
 MRS. MALCOLM STUART
 MISS ANNE STUYVESANT
 MR. I. K. TAYLOR
 MRS. J. TODHUNTER THOMPSON
 MRS. EMMA L. TISDALY
 MRS. FRANCIS J. TORRANCE
 MISS EDYTH J. TURNER
 MISS H. I. TURNER
 MISS JANE TUTTLE
 MISS ELIZABETH VANWINKLE
 MISS MARY S. VANWINKLE
 MRS. PATRICK A. VALENTINE
 MRS. JAMES B. VAN WOERT
 MRS. HAMILTON WEBSTER
 MRS. JULIA G. WELCH
 MISS JULIA CHESTER WELLS
 MRS. LAWRENCE WELLS
 MISS EDITH WETMORE
 MRS. S. H. WHEELER
 MISS CAROLINE WHITE
 MISS MAY W. WHITE
 MR. FRED S. WHITEFIELD
 MISS M. L. WIKOFF
 MRS. JOSEPH E. WILLARD
 MRS. MALCOLM WILSON
 MISS CAROLINE M. YOUNG
 MR. JOHN YOUNKINS
 MRS. CORNELIUS ZABRISKIE

Sustaining Members

MISS EMILY BUCH	MRS. EDWARD H. PEASLEE	MRS. GEORGE A. ROBBINS
MRS. HENRY COLEMAN DRAYTON	MRS. WILLIAM WILLIS REESE	MRS. SAMUEL THORNE
MRS. CLEVELAND H. DODGE	MRS. JOHN S. ROGERS	MR. W. A. THOMPSON, JR.

Honorary Members

Rt. Rev. WILLIAM T. MANNING, D.D., D.C.L., Bishop of New York
 H. GLOSTER ARMSTRONG, H.B.M., Consul General of Great Britain
 T. F. BERNARDI, Royal Consul General, Italy.

LEGACIES TO THE INSTITUTE

The **Institute** has been greatly aided by this form of generosity. No precise words are necessary to a valid legacy to the corporation. The following clause, however, may be suggested:

FORM OF BEQUEST

I give and bequeath to the "**Seamen's Church Institute of New York,**" a corporation incorporated under the **Laws** of the **State of New York,** the sum ofDollars to be used by it for its corporate purposes.

If land or any specific personal property such as bonds, stocks, etc., is given, a brief description of the property should be inserted instead of the words "the sum ofDollars."